

NEW ELEC

MOTOR PROTECTION & CONTROL TECHNOLOGY

OLR & UCR Single-Pole Protection Relays for Monitoring Motor Current



A South African Company to be Proud of

About

The OLR 8 and UCR 80 relays monitor one phase of a 3-phase motor and permit a 1A secondary input from a suitably selected current transformer.

The relays are equipped with one main trip contact which energises after a user-selected time delay (provided the fault condition persists over the entire timing period) and one instantaneous changeover contact which energises upon the detection of the fault condition.

Overcurrent related problems

The NewElec OLR 8 is able to prevent mechanical breakdowns related to impact to rque conditions suc has:

- Screw conveyors
- Bucket elevators
- Gear boxes, couplings, chains, etc.
- Preparatory overload warning or control function prior to overload trip
- Stall detection of any kind including a moving part driving into a mechanical end stop
- Regulating current demand especially when used in conjunction with the NewElec UCR80

Undercurrent related problems

The NewElec UCR 80 is able to prevent:

- Problems related to blocked delivery or loss of prime in pumping applications
- Problems relating to conveyor belt installations where they are running idle, or couplings are broken
- Problems relating to V belt slippage or blocked filters on ventilation fans
- Problems relating to drop in efficiency due to pump impeller wear



Settable parameters

	<i>OLR8</i>	<i>UCR80</i>
<i>Load setting dial*</i>	<i>30 to120%</i>	<i>30 to120%</i>
<i>Trip timedelay</i>	<i>1 to10s</i>	<i>5 to50s</i>
<i>Auto or manualreset</i>	<i>selectable</i>	<i>selectable</i>

$$\frac{\text{* Load to bemonitored}}{\text{Current transformerratio.}} \times 100 = \% \text{ load setting}$$

Additional Benefits

- These are chassis mounted relays incorporating an 11-pin plug-inbase
- The main trip output relay is fail-safe
- Localised resetfacility
- Three LED displays for 'power on', 'over or underload' detection and 'trip indication' are provided
- User-selectable auxiliary supply voltage of 110 or 220 Volt a.c.
- A 1 year warranty is offered with the product

*OLR8/MC/1/S Stall Over load Relay
or
UCR80/MC/1/S Under Current Relay*

OLR 8 / UCR 80 Over current Relays

INPUT CONVERTOR

Overload 600% Load setting 5 min. Capacity 800% Load setting 1min.

LOAD LEVEL SETTING

Span 30% to 120% In. Level setting accuracy %
Linearity %
Detection level 2%
Repeatability 5%

TRIP DELAY

OLR8 1 to 10sec
UCR80 5 to 50sec

Level setting %
Linearity %
Time accuracy 10%

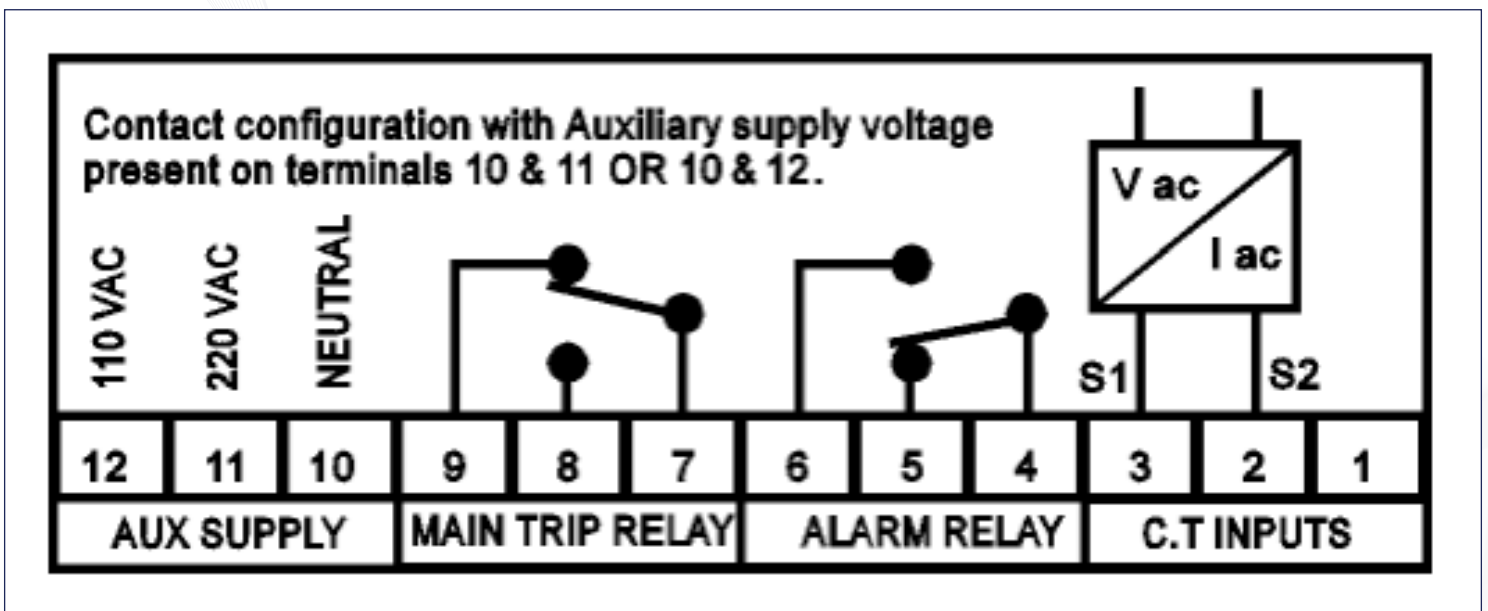
AUXILIARY AND MAIN TRIP RELAY CONTACTS

Rating 6 amps 220Vac
Configuration 1 x Form C

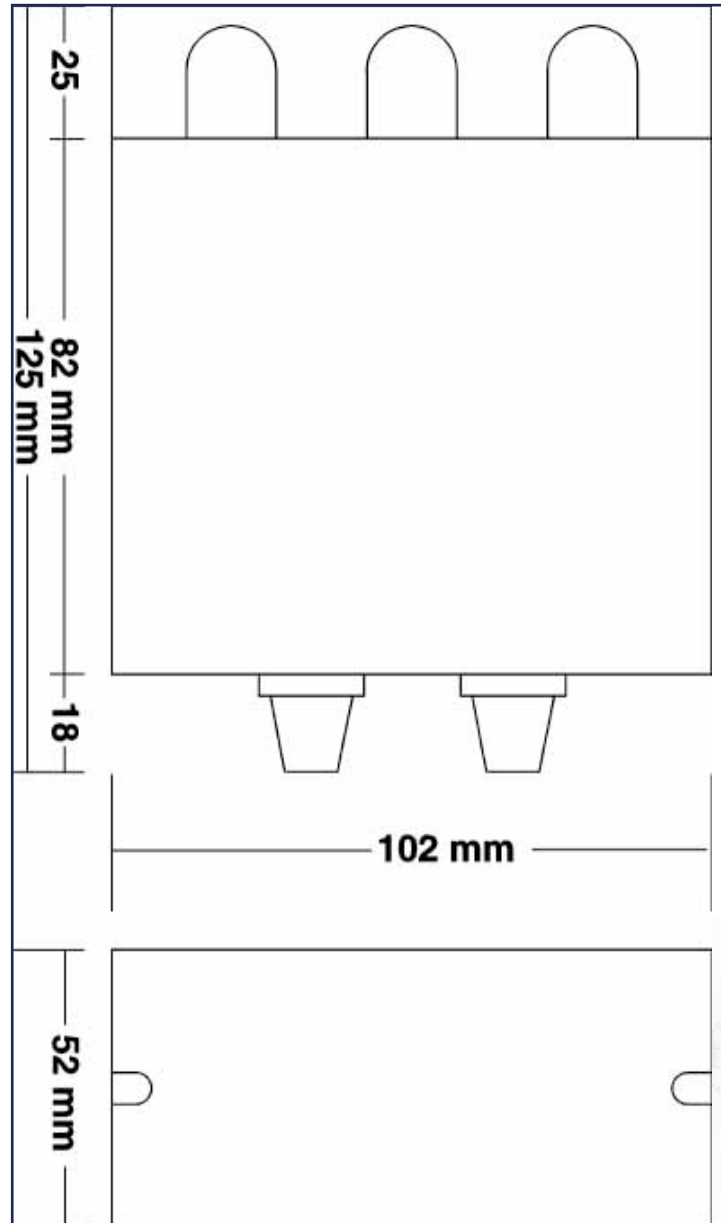
CONTROL SUPPLY

220Vac $\pm 10\%$
110Vac $\pm 10\%$
Frequency 2 - 67Hz
Power 1,5Va.
Fail-safe operation Unit trips on loss of control supply

OLR8 & UCR80 Electrical Connection Diagrams



OLR8 & UCR80 Dimensions



NEW ELEC

MOTOR PROTECTION & CONTROL TECHNOLOGY

Physical Address:

298 Soutter Street,
Pretoria West

Tel: +27 12 327 1729

Fax: +27 (0)12 327 1733

Toll Assist: 0860 10 30 41

www.newelec.co.za

sales@newelec.co.za

OLR & UCR

Single-Pole Protection Relays for Monitoring Motor Current

